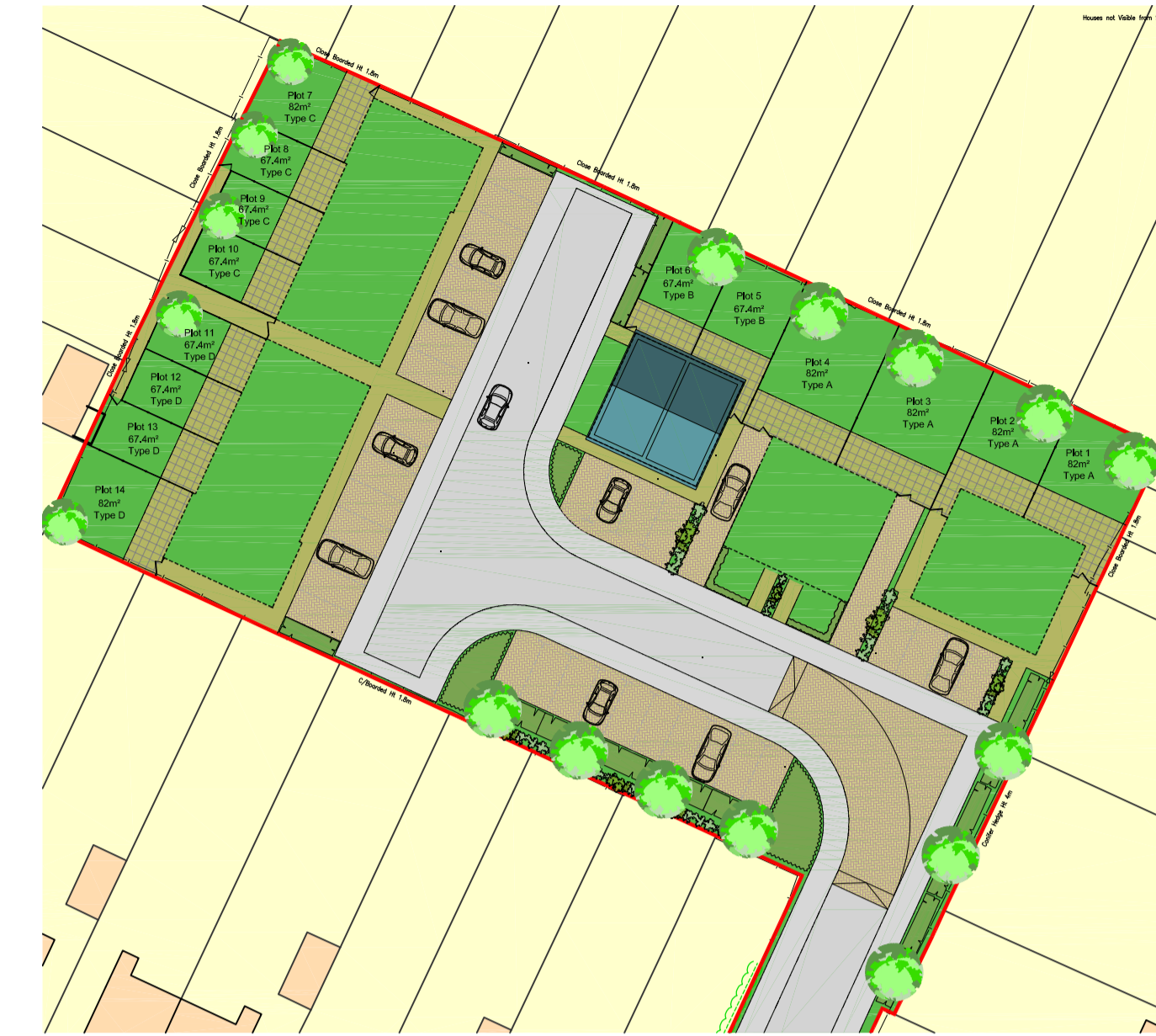


P\_2019\_01511  
Received 19/12/2019



Site / Key Plan

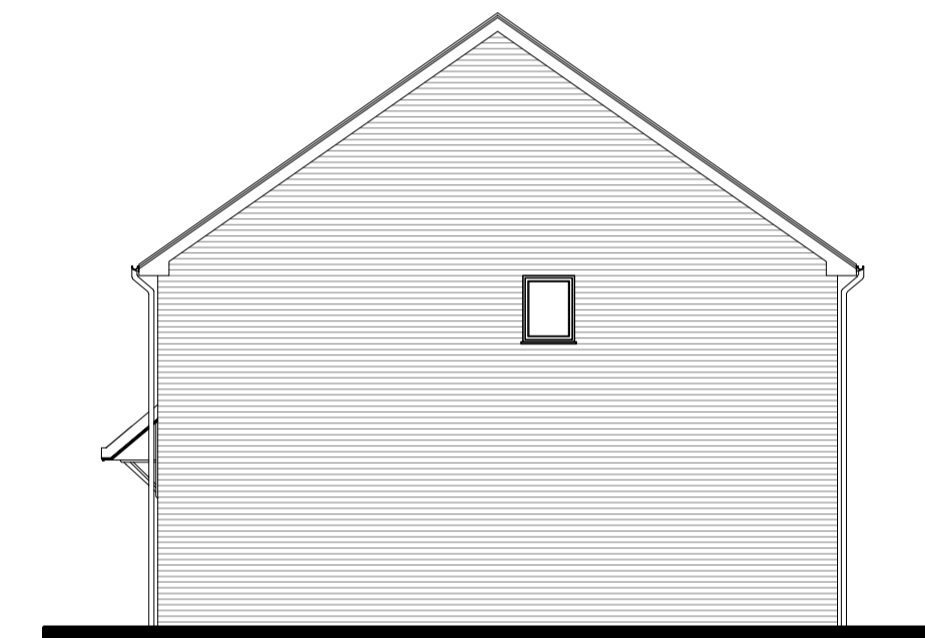
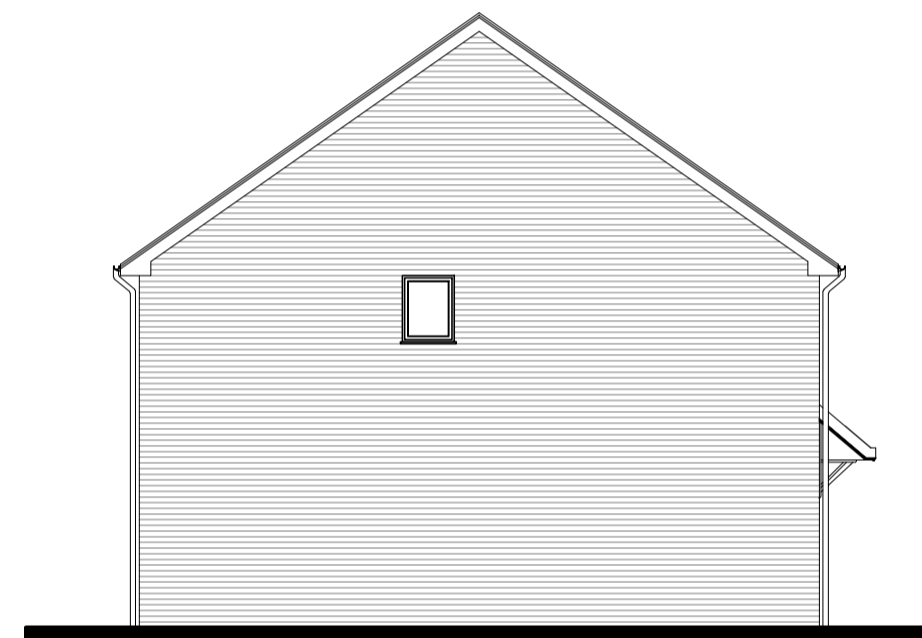
1:500

Printed or electronic copies of this drawing can be scaled for planning purposes only. Any discrepancies with this drawing to be reported and clarified prior to commencing work on site, if in doubt - Ask.  
Corporate Architecture Ltd accept no responsibility for works not undertaken fully in accordance with this drawing and relevant specifications.  
Copyright © Corporate Architecture Limited

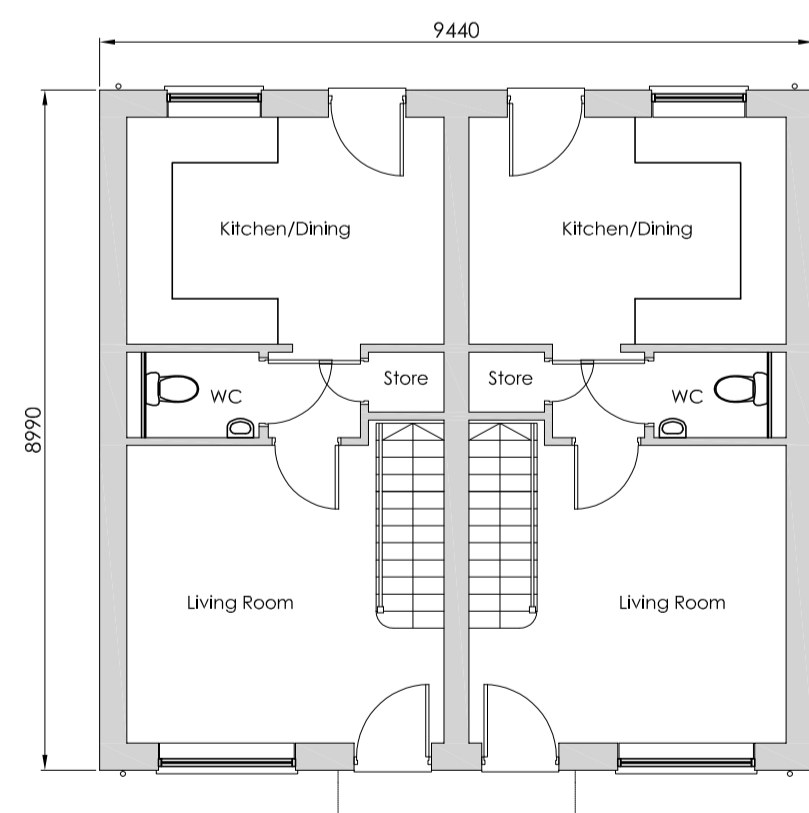
North point:

Notes:

Schedule of Accommodation	
14 no. Units -	8 no. x 2 bed 4 person house - 67.4m <sup>2</sup> (725sqft)
	6 no. x 3 bed 5 person house - 82m <sup>2</sup> (883sqft)
	(2 allocated parking spaces, plus 10 additional parking spaces)
Total Site Area = 3.720m <sup>2</sup> (0.919 acres).	

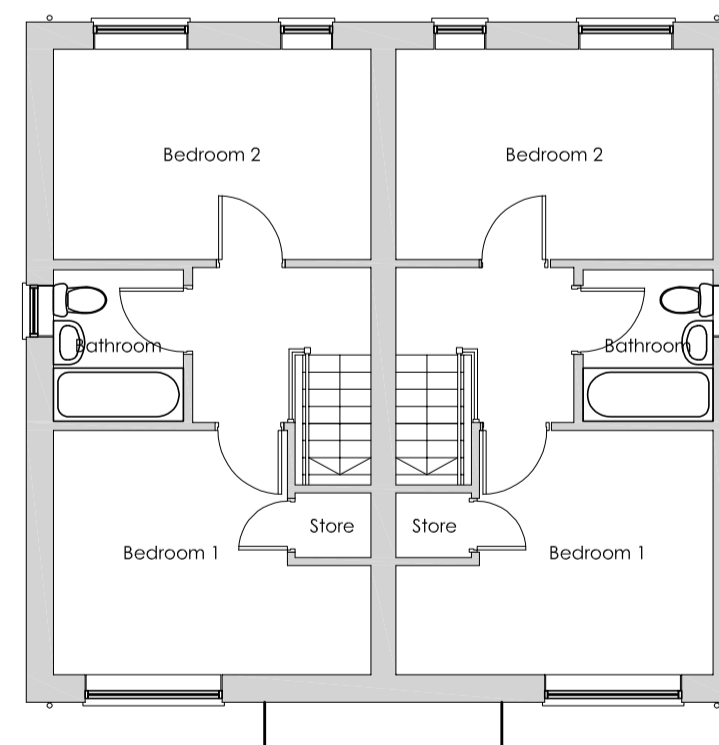


Elevations

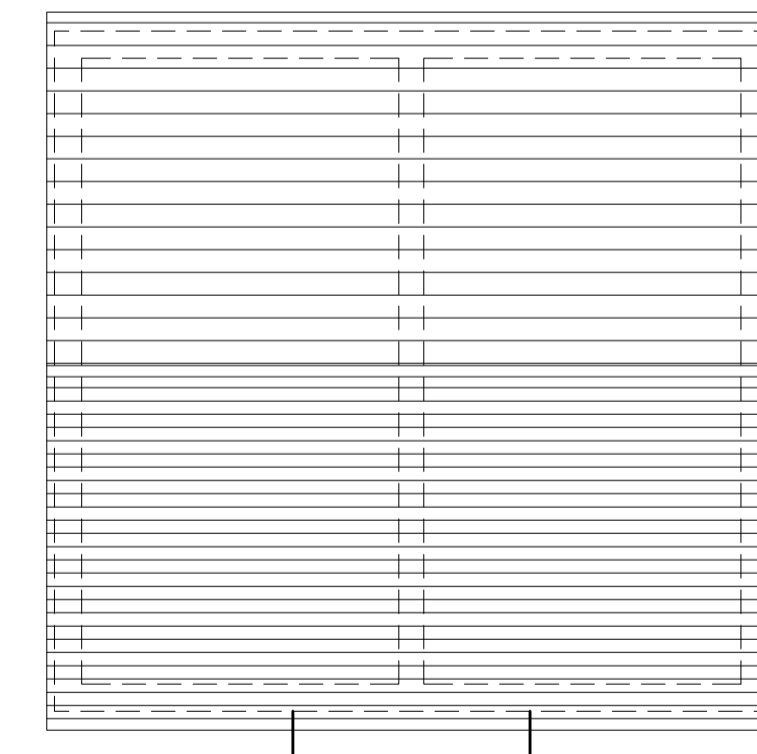


Ground Floor

1:100



First Floor



Roof Plan

Revision Log:			
P1	House Type amended for Plots 7-14	CES	Dec '19
P0	Issued for Reserved Matters	CES	Nov '19
Rev:	Description:	By:	Date:

Project:  
Development of the land at Harbury Street, Burton on Trent

Client:  
Andrew Granger and Co Ltd

Scale:  
0 1m 2m 3m 4m 5m 1:100

Drawn by:	Checked:	Date:	Paper Size:
CES	MVFA	Nov '19	A1

Drawing Title:  
General Arrangement - House Type B - 2 Bed

Drawing Status:  
PLANNING ISSUE

Drawing Number:	Revision Number:
3973/AG/16/007	P1



**CORPORATE ARCHITECTURE LIMITED**  
CHARTERED ARCHITECTS

HEAD OFFICE  
Venart House, 1 Titchbush Way,  
Market Harborough,  
Leicestershire, LE16 7XY  
Tel: 01858 467476